

# TOBIN CENTER FOR THE PERFORMING ARTS

SAN ANTONIO, TX



## TECHNICAL REPORT I • PART I LIGHTING PROPOSAL MEMO

LAURA ASHLEY A. ALFERES  
LIGHTING | ELECTRICAL  
FACULTY ADVISOR | DR. KEVIN HOUSER  
09.09.2013

# OVERVIEW

---

The following Senior Thesis lighting proposal, for the lighting portion, will address four spaces that will be analyzed and redesigned. These spaces include:

- Patron's Lounge | special purpose space
- Main Auditorium | large work space
- Main Lobby | circulation space
- Event Plaza | outdoor space

Three schematic design concepts will be created for the main lobby. Additionally, a lighting solution with appropriate psychological impressions will be produced for the Patron's Lounge.

# TASK ANALYSIS

---

This portion of the document will describe the individual spaces and their functions. A task analysis of visual and non-visual activities will be performed to form the basis of a lighting design. Per space, drawings, space dimensions, materials, and activities and/or visual tasks will be included.

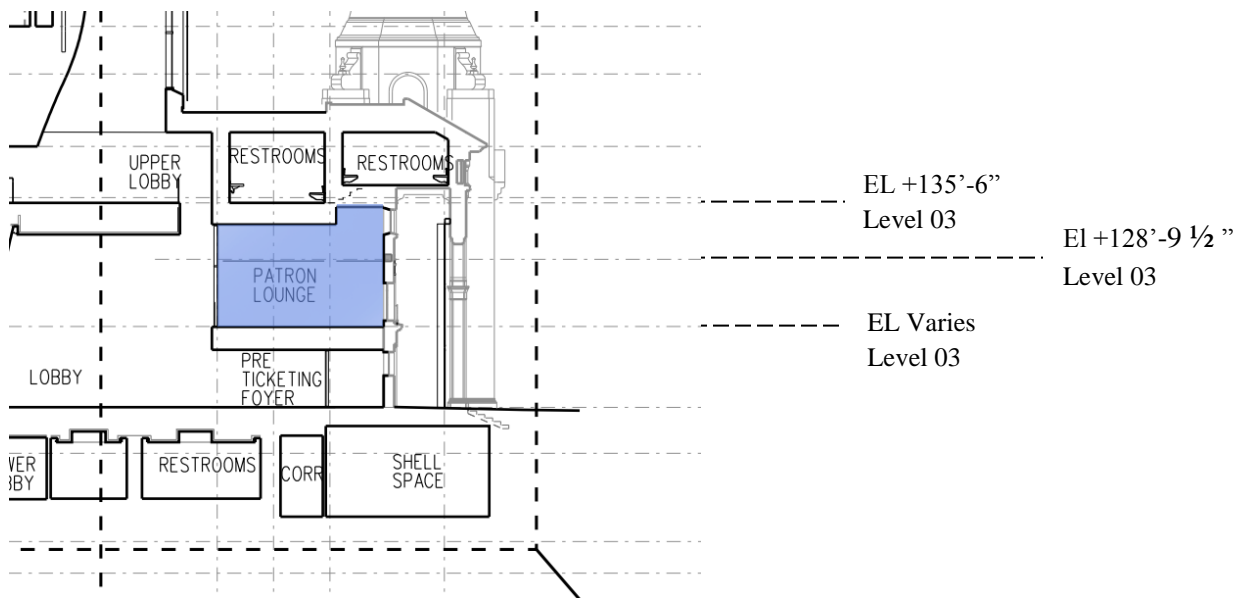
## PATRON'S LOUNGE | SPECIAL PURPOSE SPACE

The Patron's Lounge is an important component of the program. It functions as a gathering space for patrons and performers, as well as support donor accommodations and special events. Located on Level 02, it is within the volume of the existing south entry just above the main entry lobby and is at the same level as the first balcony box tier. Additionally, it is connected to the box seating by a separate bridge way leading directly to sound and light locks of the private boxes. Its individual program includes a lounge, bar, furniture storage, restrooms and a service pantry. The Lounge's architecture is unique but simple, for a structural glass wall support framing allows patrons to see below into the main lobby. A relaxed psychological impression is desired to not only signify lounge activity, but also to create an inspiring expression for the performing arts in San Antonio.

Drawings with Dimensions: 64'-2" x 24'-3" (L x W)  
 (please refer to A696 for elevations and plan view details)

**Table 1: Patron's Lounge Materials**

<b>Floor</b>	Broadloom carpet, sealed concrete, ceramic tile
<b>Base</b>	Wood base, ceramic tile, linoleum flooring
<b>N,S,E,W Walls</b>	Paint, wood wall panel, acoustic wall panel
<b>Ceiling</b>	Wood ceiling panels, paint
<b>Note</b>	Due to there being multiple elements within the program of this space, this is a generalization of materials for all elements combined.



*\*Note: view of Patron's Lounge can be seen in the Main Lobby rendering*

## MAIN AUDITORIUM | LARGE WORK SPACE

The main auditorium is defined as a venue suitable for multiple productions, such as theatrical productions, orchestral concerts, dance performances, films, amplified events, and lectures. Its seating capacity can fit 1,750 audience members, but is also variable depending on the pit lifts, which are used as stage extensions or for an orchestra. This space shall respond to various lighting and rigging requirements for these configurations. The focus will be on the house lighting.

Drawings with Dimensions: auditorium parapet elevation 179'- ½"  
 (please refer to drawings A301 & A302 for elevations and A261 for typical length and width for levels 01-05 + catwalk)

**Table 2: Main Auditorium Materials**

<b>Floor</b>	Stained/polished concrete, modular tile carpet
<b>Base</b>	Wood base
<b>N,S,E,W Walls</b>	Paint, wood wall panel
<b>Ceiling</b>	Wood ceiling panels



*(Courtesy of LMN Architects)*

## MAIN LOBBY | CIRCULATION SPACE

The main lobby, located on two levels, shall provide a strong visual and experiential connection between the historic entry/pre-ticketing foyer and the new auditorium. To promote a sense of welcome and express the culture of performing arts, the lighting should enhance and compliment the architecture within this area. The architecture within this space is particularly unique and dynamic. It is accentuated with a curved wall, pillars, a donor wall, and a Patron’s Lounge. Three schematic design concepts will be produced for this space.

Drawings with Dimensions: Please refer to drawing A610 for elevations and dimensions.

**Table 3: Main Lobby Materials**

<b>Floor</b>	Terrazzo
<b>Curved Wall</b>	Glass fiber reinforced gypsum panels
<b>N,S,E,W Walls</b>	Paint
<b>Ceiling</b>	Paint



*(Courtesy of LMN Architects)*



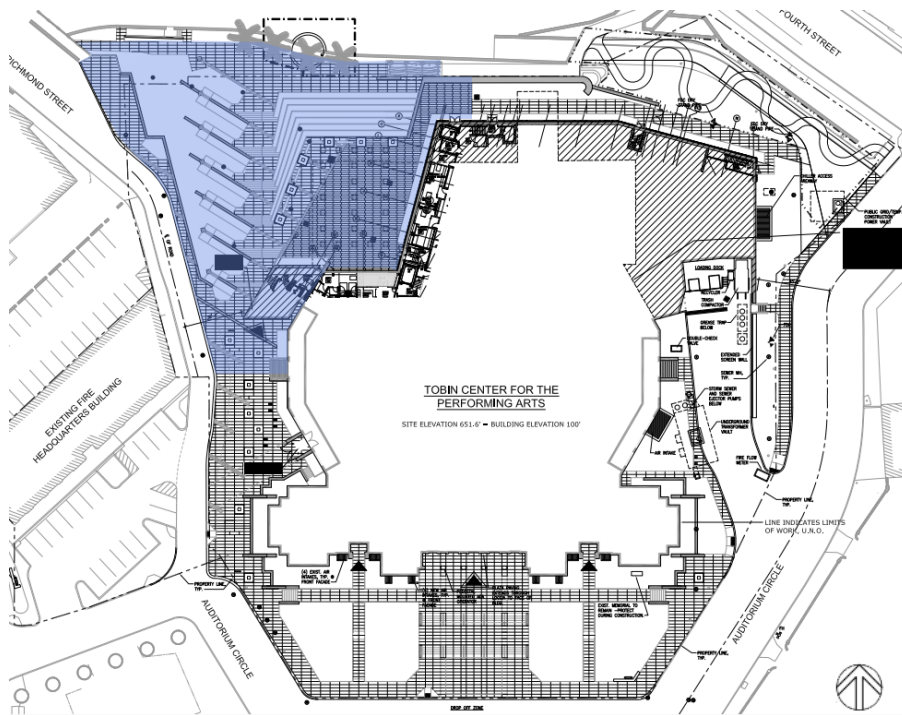
## EVENT PLAZA | OUTDOOR SPACE

The Event Plaza, located in the west side of the site, will link the San Antonio River Walk to the Tobin Center. It serves as an outdoor performance space to enhance the experience of events being held inside the Center, providing patrons a strong sense of exterior happenings. Further investigation will be performed to understand the topography, interaction amongst pedestrians, and the connection to the river.

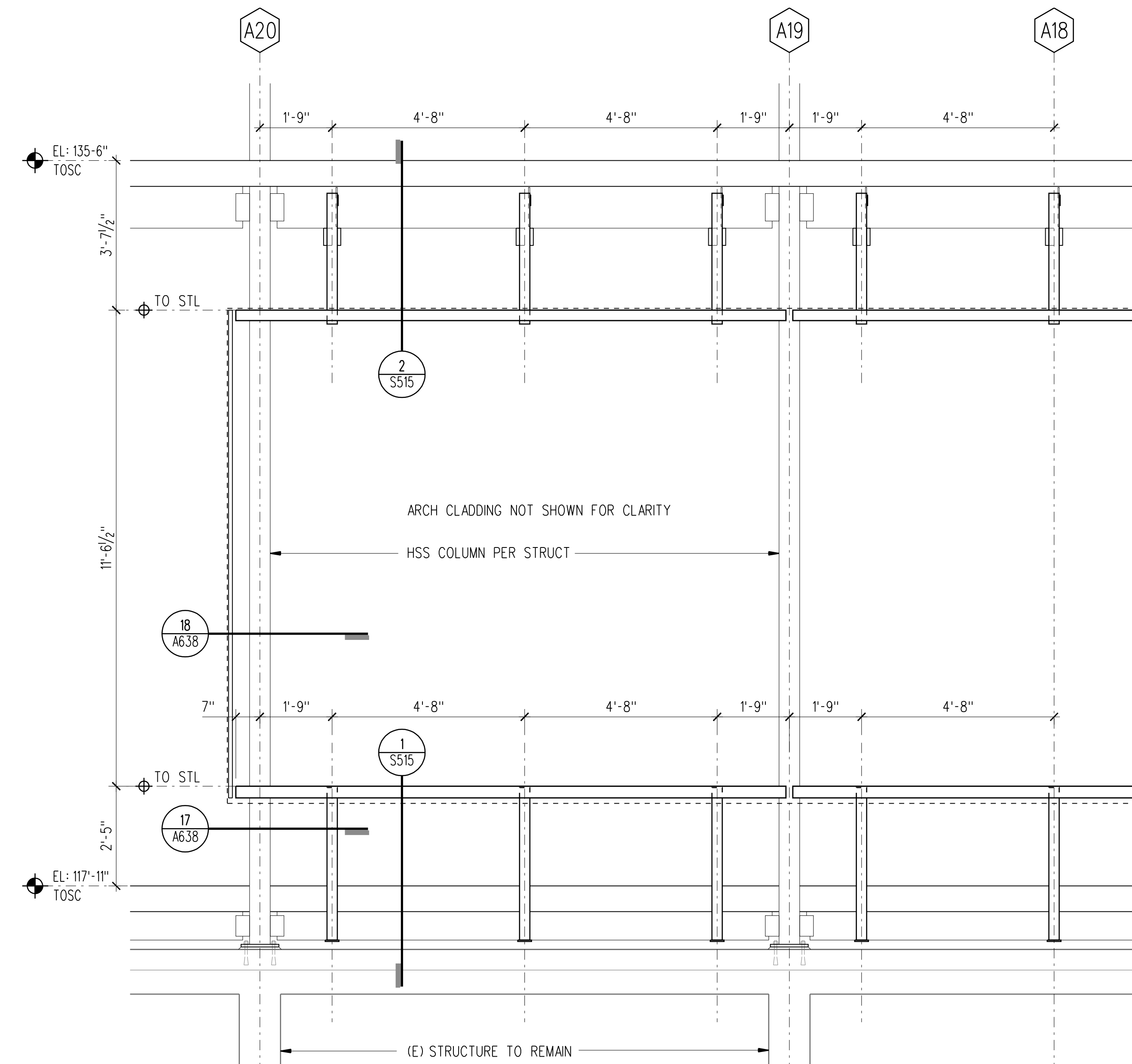
Dimensions: Highest elevation 646.50'

**Table 5: Event Plaza Materials**

<b>Primary Site Paving</b>	New, poured in place, lightly sandblasted concrete
<b>Amphitheater Paving</b>	Crushed gravel from Cactus Canyon; #2 sized 'Amber' colored aggregate gravel consists of a mixture of #2 sized aggregate and fines mixed w/ Portland cement & placed over a 3" bed of compacted decomposed granite
<b>Steps</b>	Stainless steel handrails
<b>River Walk Edge</b>	Existing large stone retaining wall
<b>Landscape</b>	Palette of trees (primarily Live Oaks) and plants
<b>Site Furnishings</b>	TBD



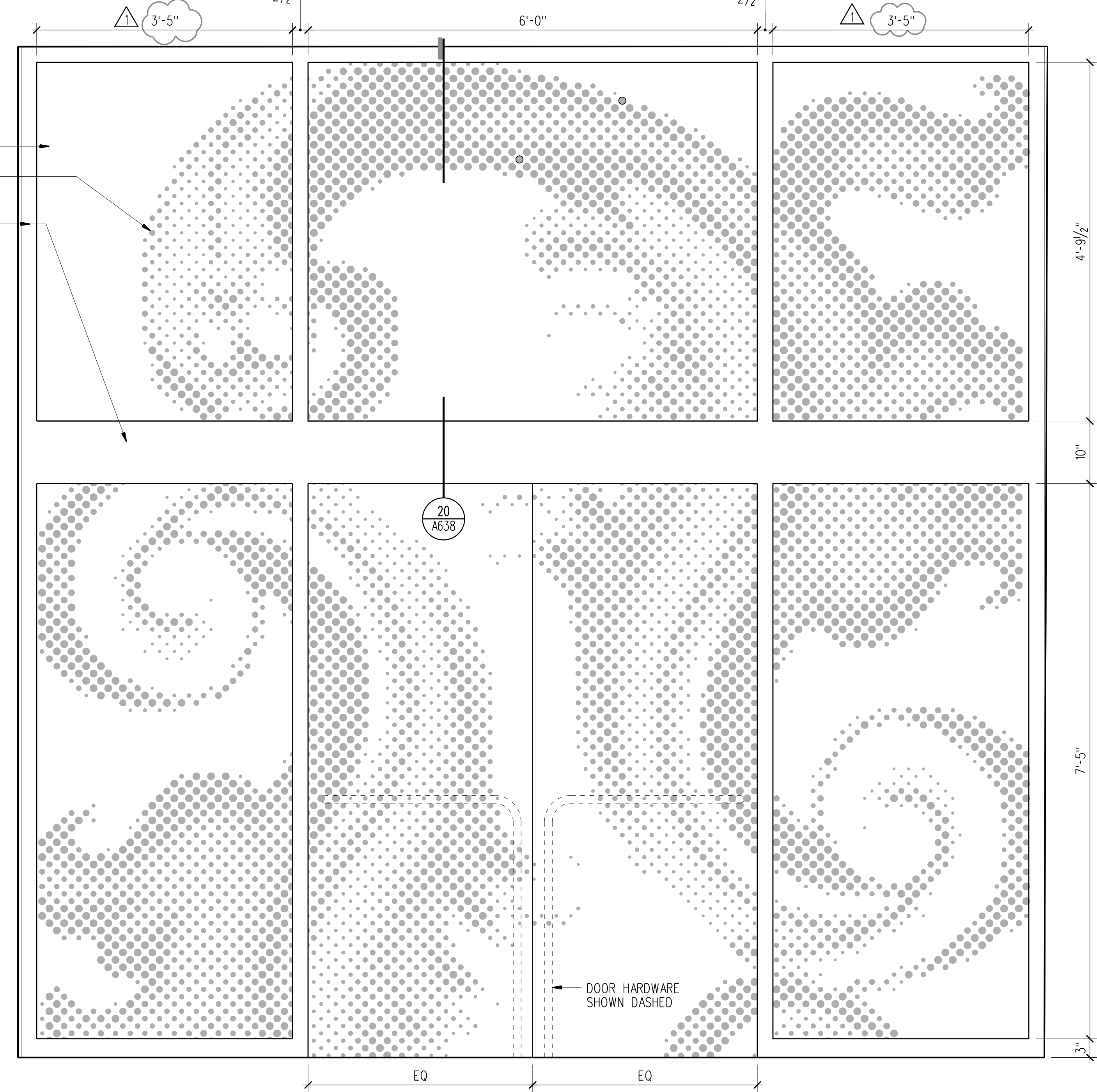
(Courtesy of LMN Architects)



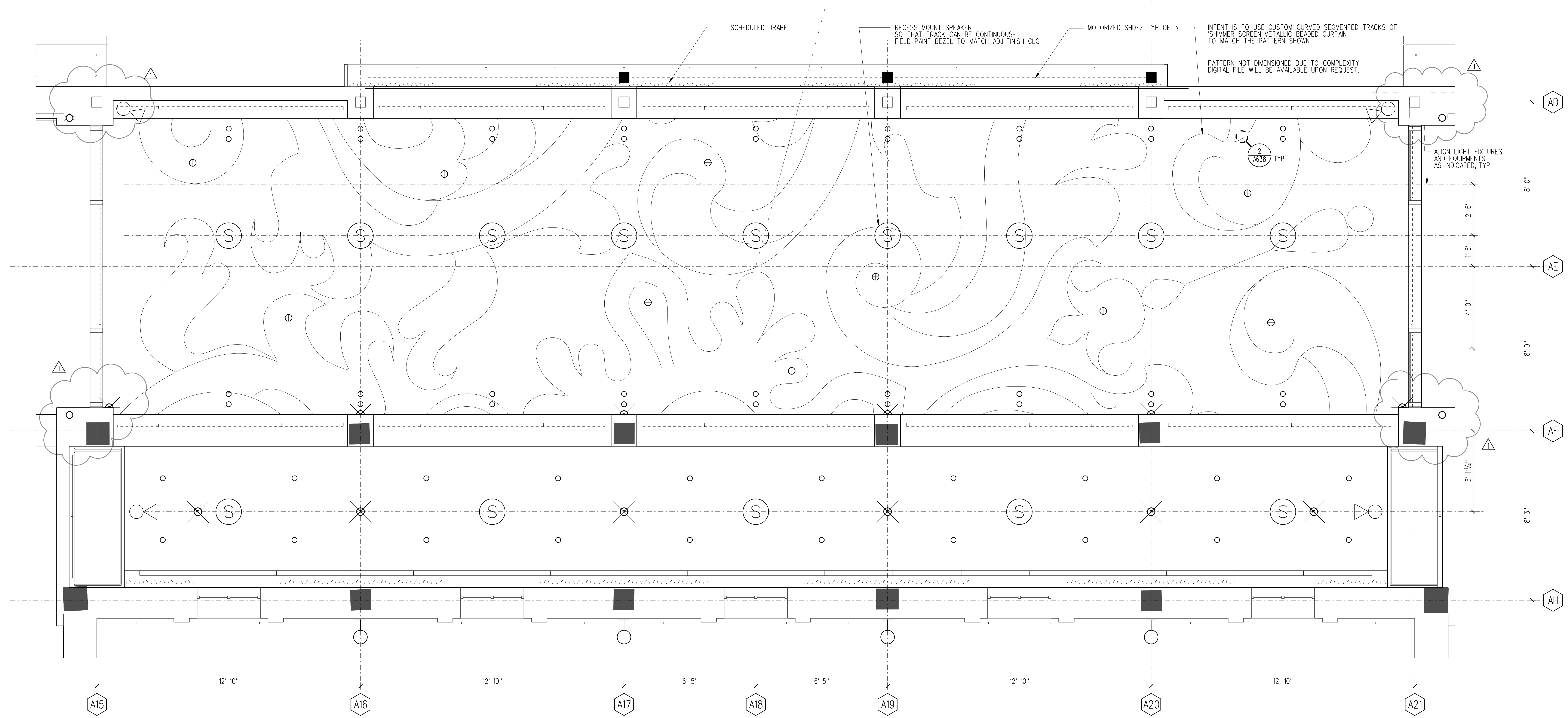
**3** STRUCTURAL GLASS WALL SUPPORT FRAMING - ELEVATION  
SCALE: 1/2" = 1'-0"  
C11-G04

CUSTOM GRAPHIC PATTERN ON GL-14 IS PRINTED WHITE IN (2) DENSITIES ON SDA INTERLAYER. DIGITAL PATTERN WILL BE AVAILABLE ON REQUEST.

DENSITY A  
DENSITY B, TYP AT CIRCLES  
CW-3 W/  
CLR ANODIZED FINISH



**2** PATRON LOUNGE DOOR ELEVATION - GRAPHIC PATTERN ON GL-14  
SCALE: 1" = 1'-0"  
C33-F01  
VIEW FROM INSIDE PATRONS LOUNGE LOOKING OUT



**1** ENLARGED PLAN - PATRON LOUNGE 204  
SCALE: 1/2" = 1'-0"  
rcp-02.dgn

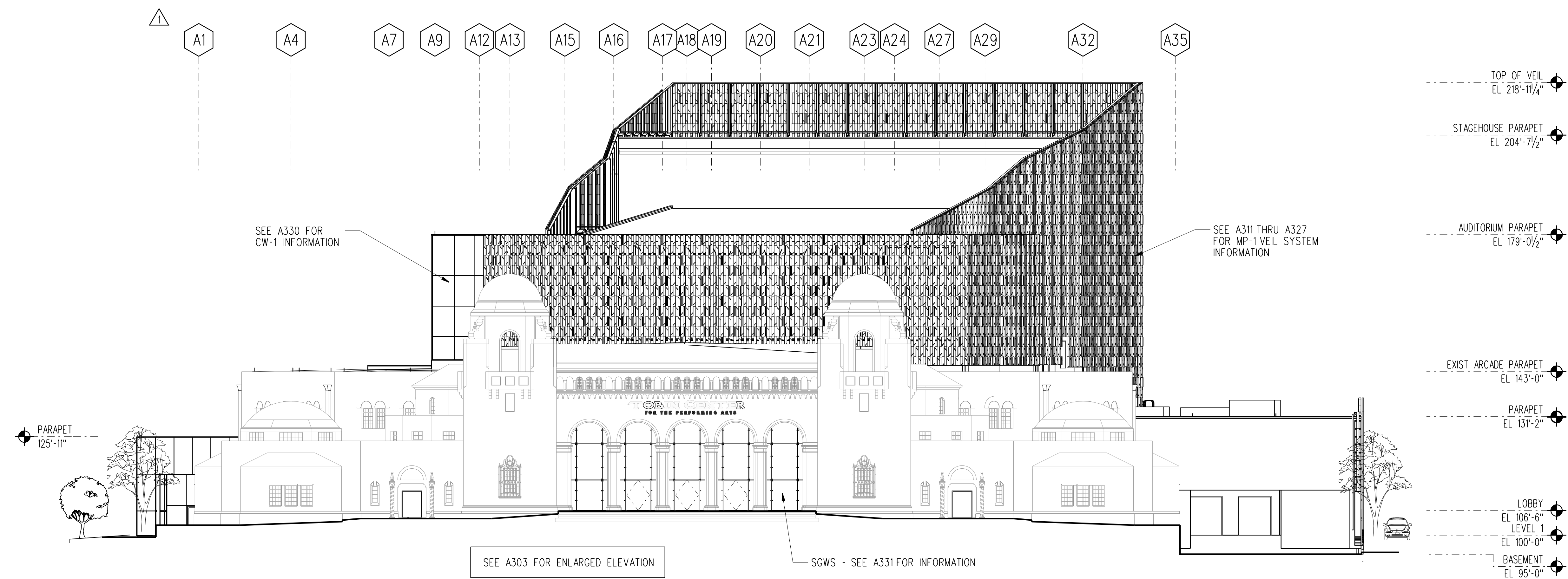
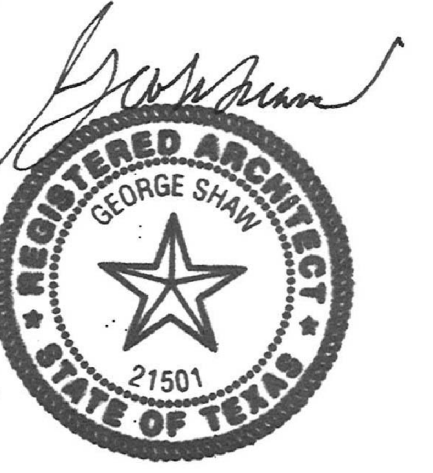
Revisions

No.	Date	By	Description
1	10/9/13	TAR	ASH-056

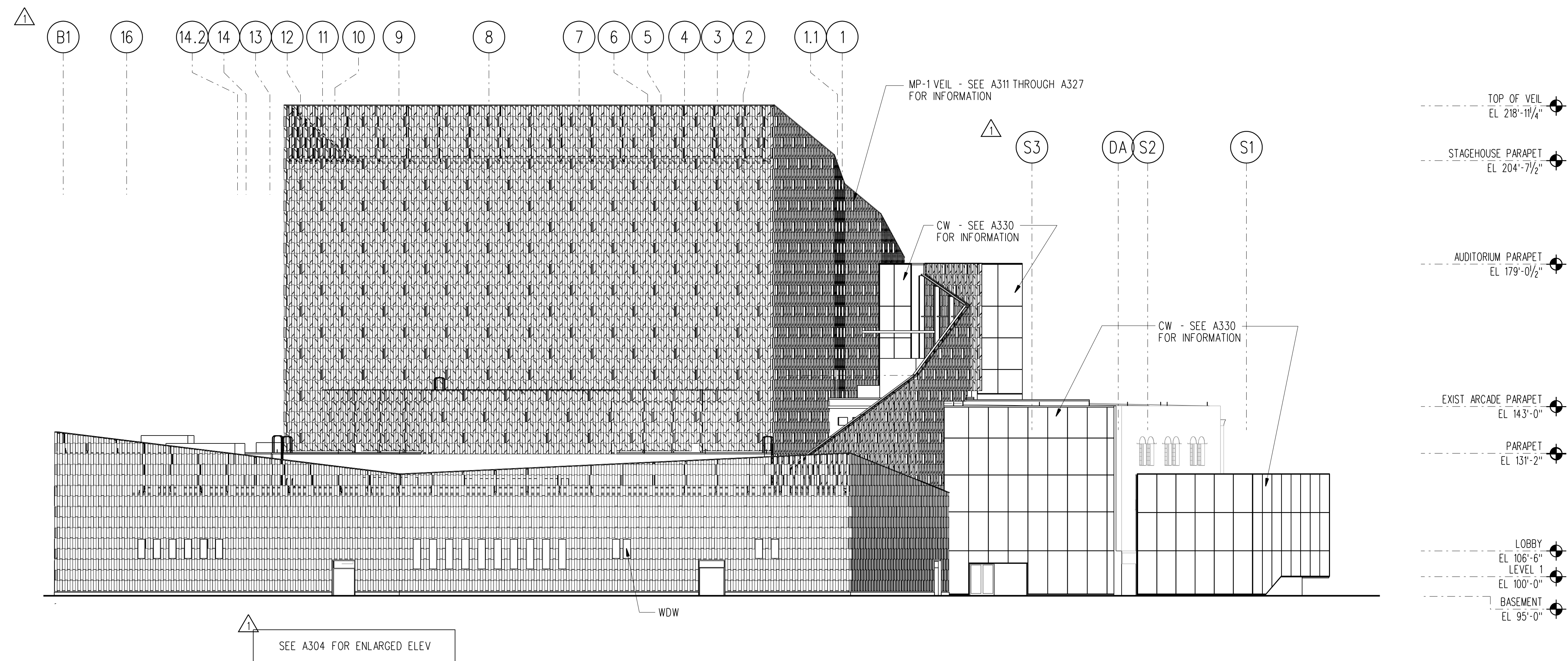
Drawn: JKL  
Checked: TG  
LMN Proj No: 07038.01  
Date: 6/1/2012  
Sheet Title:

Sheet Number: NOTE: DRAWINGS NOT PRINTED AT 1/8" = 1'-0" HAVE BEEN REDUCED IN SCALE





1 SOUTH ELEVATION  
A301 1/4" = 1' 0" ele-s.dwg



2 NORTH ELEVATION  
A301 1/4" = 1' 0" ele-n.dwg

TOBIN CENTER  
FOR THE  
PERFORMING  
ARTS

Submitted

CONFORMED  
CONSTRUCTION  
DOCUMENTS #2

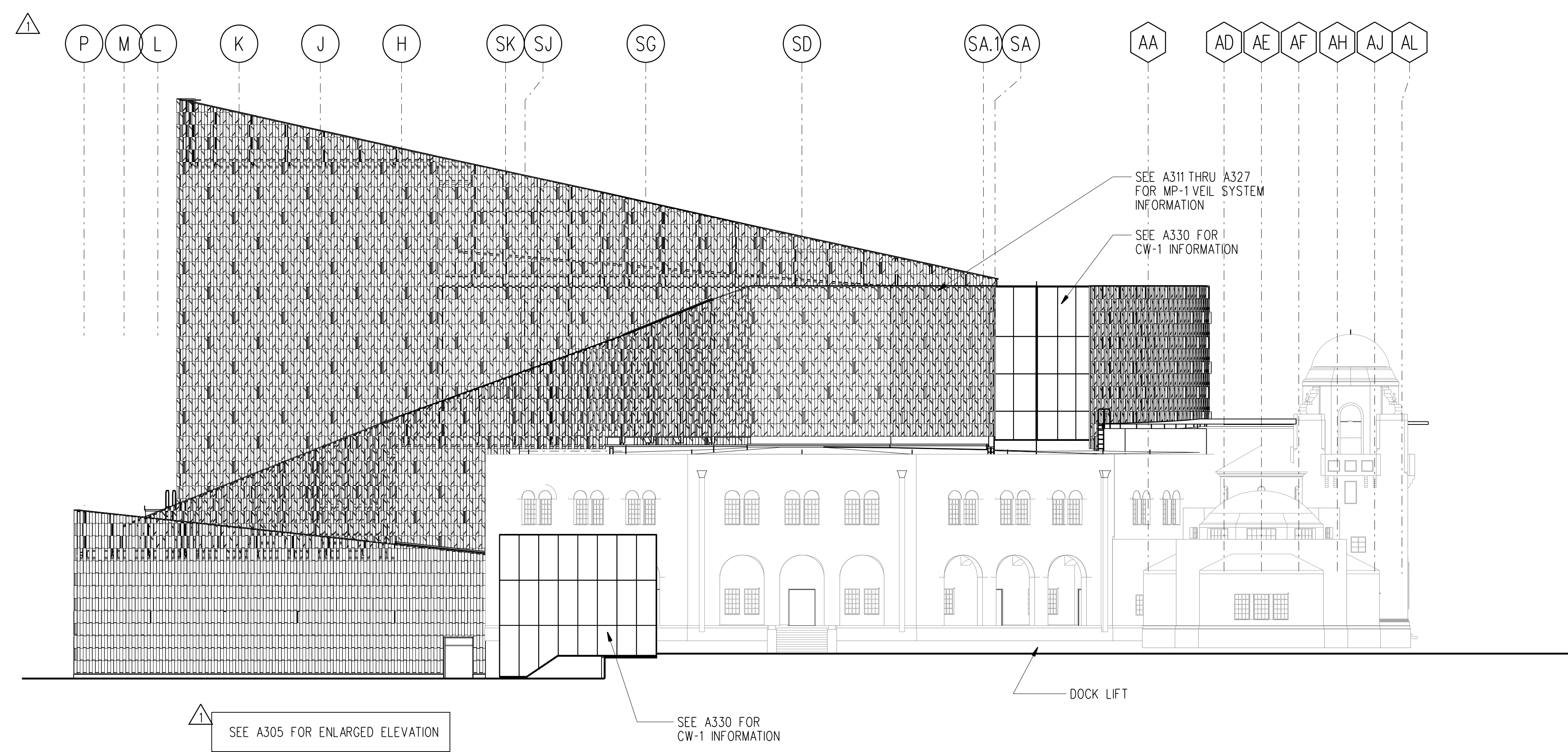
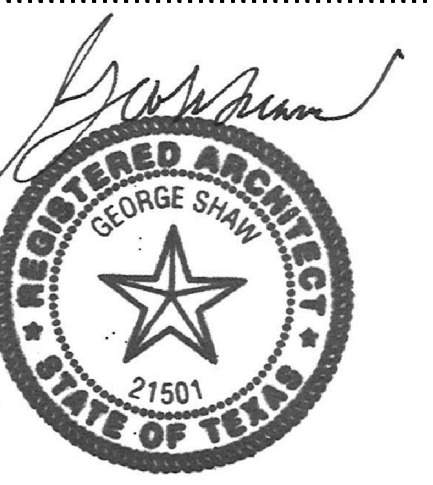
No.	Date	By	Description
1	10/31/11	MRA	Conformed Construction Documents #1

Drawn: \_\_\_\_\_  
Checked: LMN Proj No 07038.01  
Date: 6/1/2012

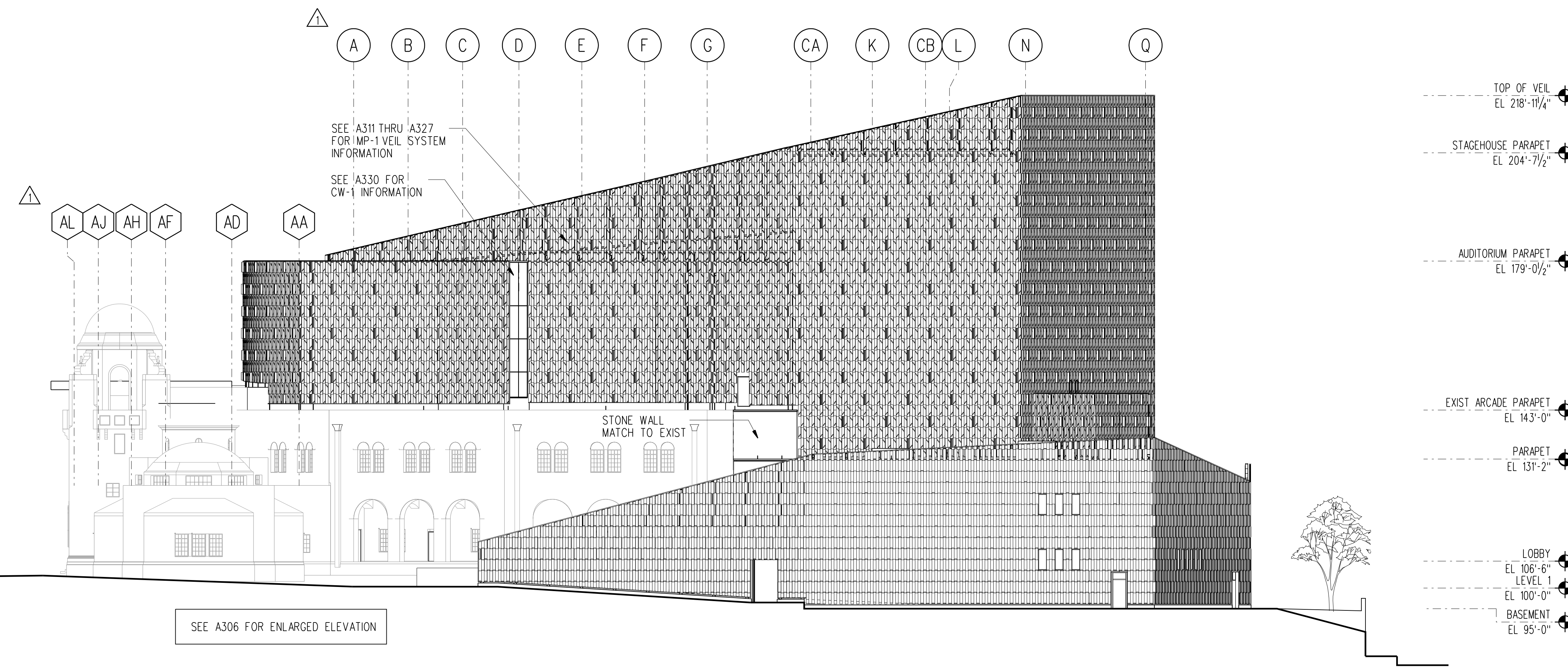
SOUTH & NORTH  
ELEVATIONS

Sheet Number: \_\_\_\_\_  
NOTE: DRAWINGS NOT PRINTED AT 1/8"=1'-0" HAVE BEEN REDUCED IN SCALE





1 WEST ELEVATION  
A302 1/4" = 1'-0" ele.w.dgn



2 EAST ELEVATION  
A302 1/4" = 1'-0" ele.e.dgn

TOBIN CENTER  
FOR THE PERFORMING ARTS

Submitted

CONFORMED  
CONSTRUCTION  
DOCUMENTS #2

Revisions

No.	Date	By	Description
1	10/31/11	MRA	Conformed Construction Documents #1

Drawn: YD  
Checked: REC  
LMN Proj No: 07038.01  
Date: 6/1/2012

SHEET TITLE  
WEST & EAST  
ELEVATIONS

Sheet Number: NOTE: DRAWINGS NOT PRINTED AT 1/8" = 1'-0" HAVE BEEN REDUCED IN SCALE





ENLARGED PLAN GENERAL NOTES

- SEE A607 & A609 FOR FLOOR TRANSITION DETAILS
- SEE FINISH SCHEDULE FOR SPECIFIC FLOOR FINISH TYPE (CP1-2, ETC)
- SEE A909-A916 SLAB EDGE DRAWINGS FOR EXTENT OF RAMPS AND TOPPING SLABS

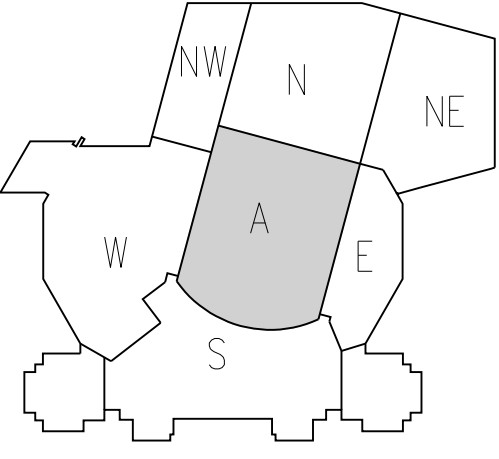
SEE A221 FOR CONTINUATION

NOTES:  
1. CALLOUTS, DIMS, AND ELEVATIONS ARE SYMMETRICAL ABOUT GRID 8, UON

LIFTS: SEE THEATRE EQUIP DRAWINGS & SHEET A/900

TOBIN CENTER  
FOR THE PERFORMING ARTS

CONFORMED  
CONSTRUCTION  
DOCUMENTS #2



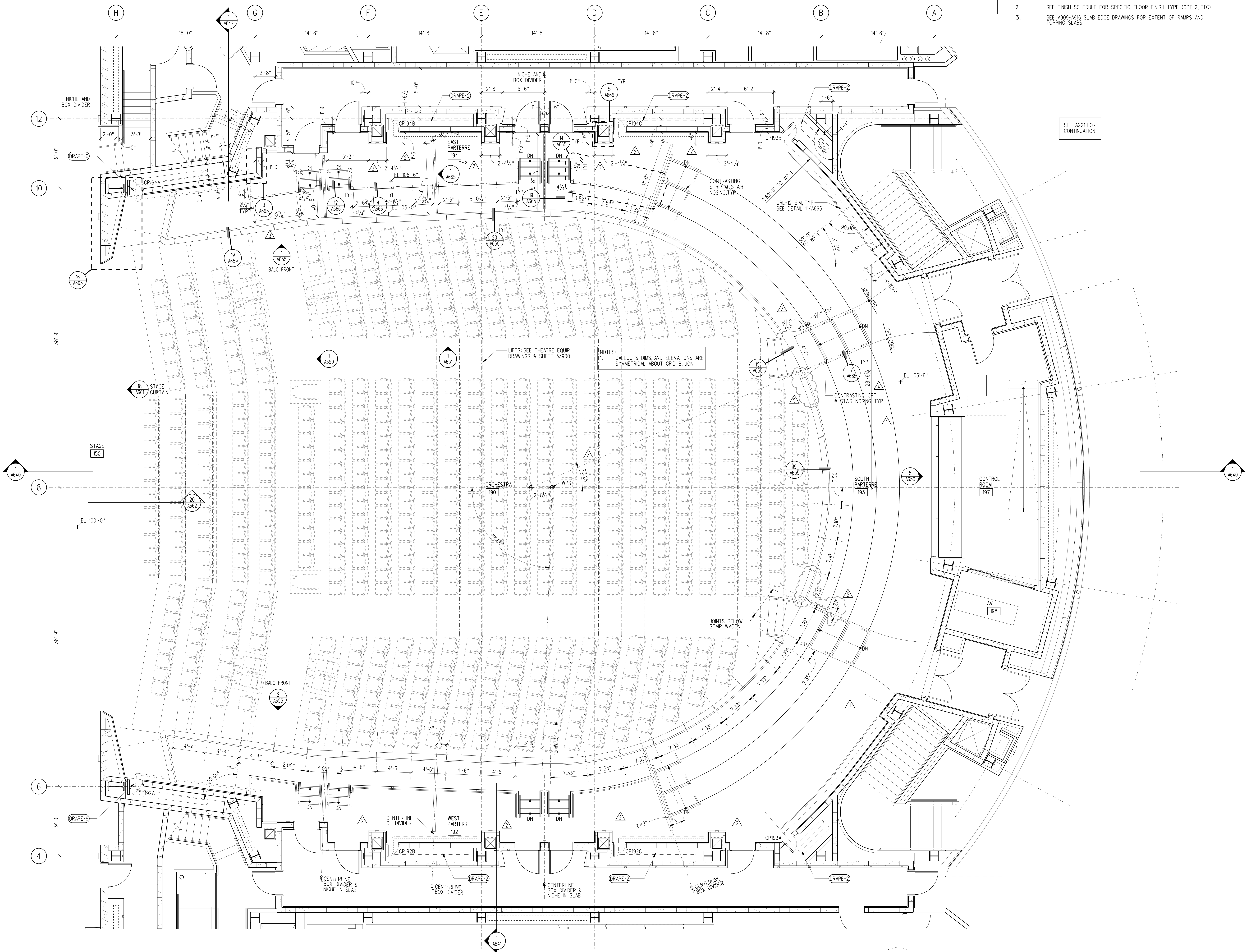
Revisions

No.	Date	By	Description
1	10/31/11	REC	CONFORMED DOCS #1
2	10/15/12	EWP	ASH-038A
3	11/15/12	RMJ	CFR-037A
4	1/9/13	RMJ	ASH-042
5	12/2/13	RMJ	ASH-070

Drawn: EP/REC  
Checked: REC  
LMN Proj No: 07038.01  
Date: 6/1/2012

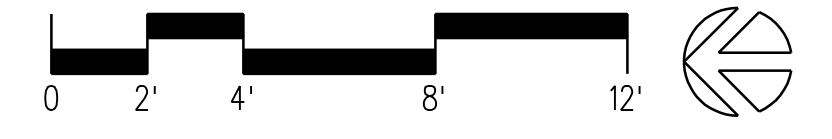
ENLARGED PLAN  
AUDITORIUM  
LEVEL 01

NOTE: DRAWINGS NOT PRINTED AT 1/4" = 1' SCALE HAVE BEEN REDUCED IN SCALE

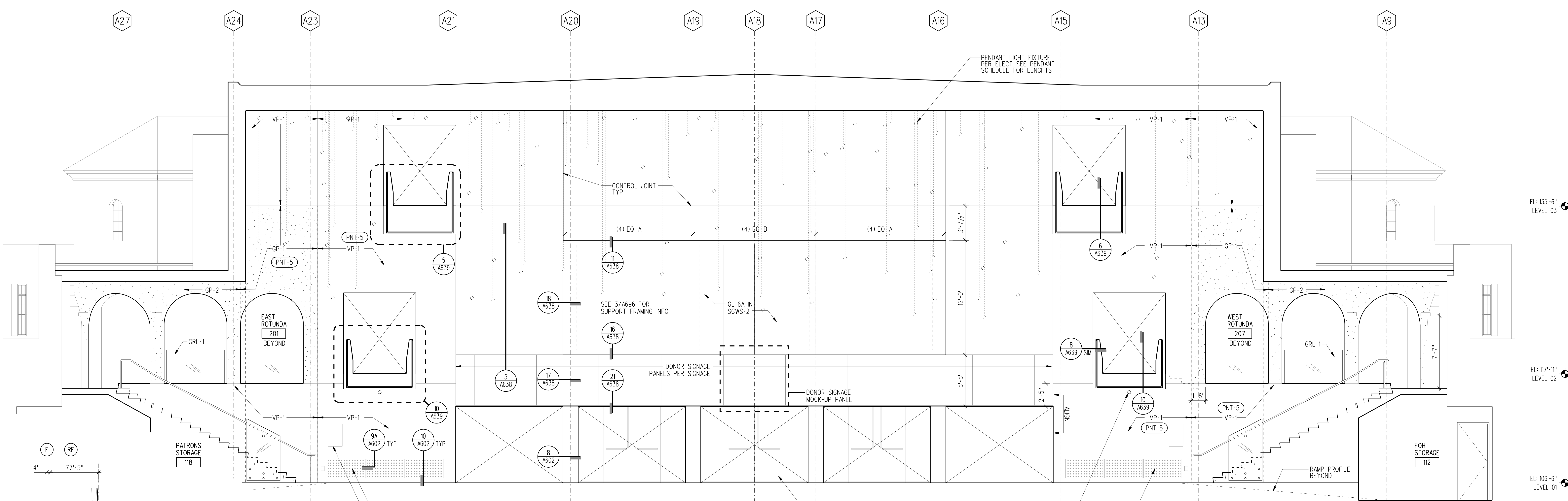
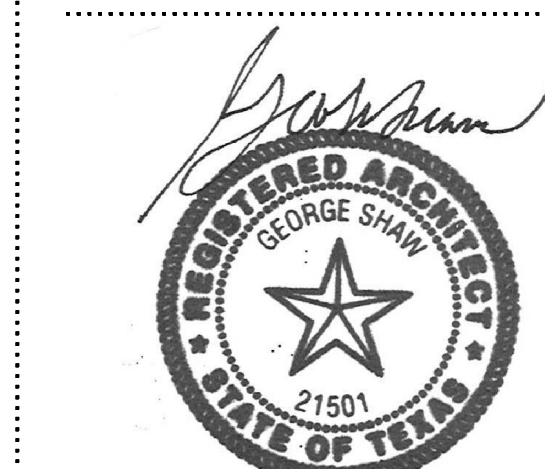


1 ENLARGED AUDITORIUM ORCHESTRA & PARTERRE PLAN

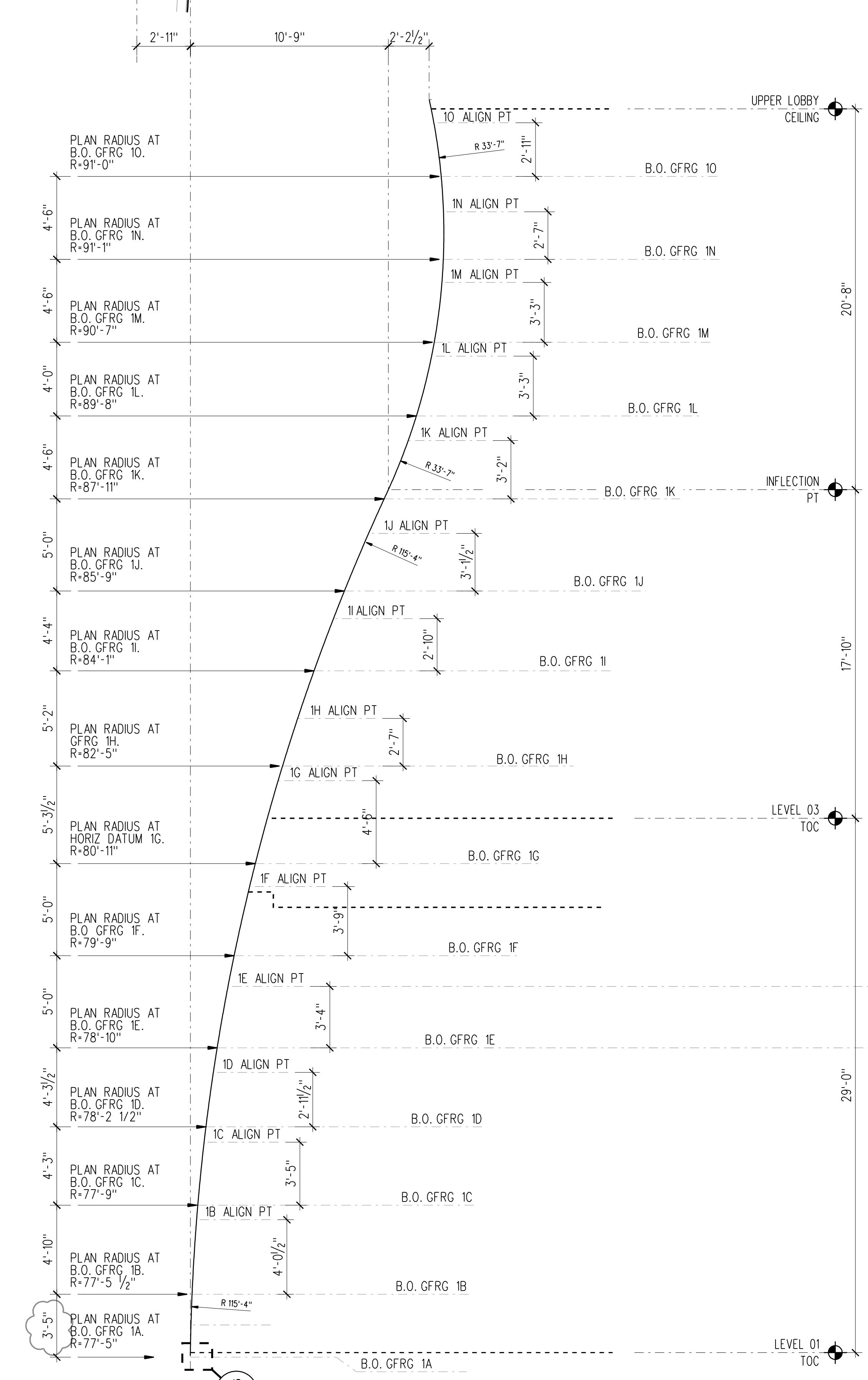
1/4" = 1' 0" pln-auditorium-01.dgn



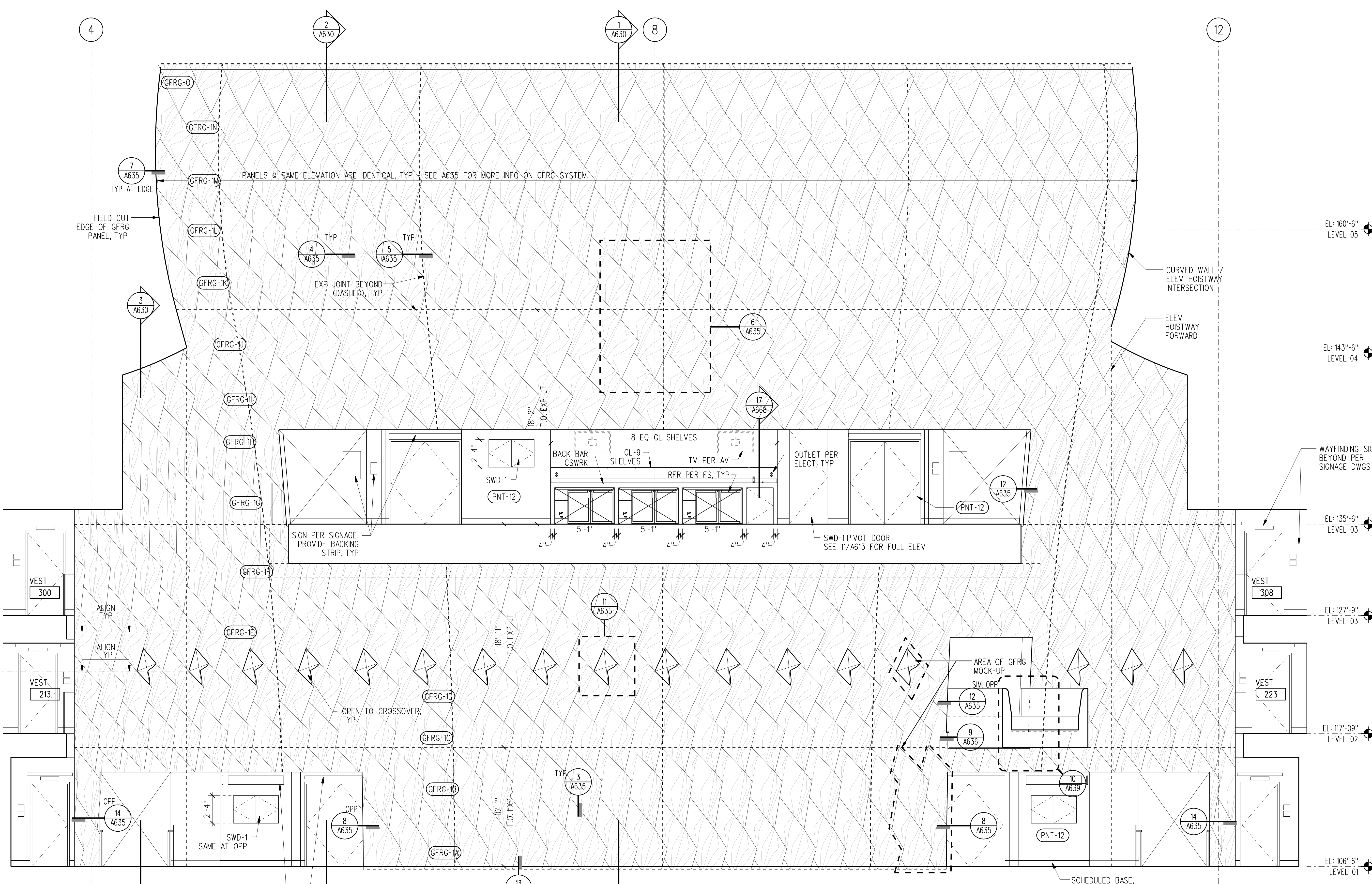




**1 SOUTH INT ELEVATION - MAIN LOBBY 120**  
1/4" = 1'0"  
iel-lobby-s.dgn



**3 GFRG WALL CURVE**  
1/4" = 1'0"  
C33-G05.dgn



**2 NORTH INT ELEVATION - MAIN LOBBY 120 & UPPER LOBBY 370**  
1/4" = 1'0"  
iel-lobby-n.dgn

**TOBIN CENTER  
FOR THE  
PERFORMING  
ARTS**

**CONFORMED  
CONSTRUCTION  
DOCUMENTS #2**

Revisions

No.	Date	By	Description

Drawn: MRA  
Checked: JXZ  
LMN Proj No: 07038.01  
Date: 6/1/2012

Sheet Title  
**INTERIOR ELEVATION  
LOBBY**

Sheet Number  
NOTE: DRAWINGS NOT  
PRINTED AT 1/8" = 1'0" HAVE  
BEEN REDUCED IN SCALE